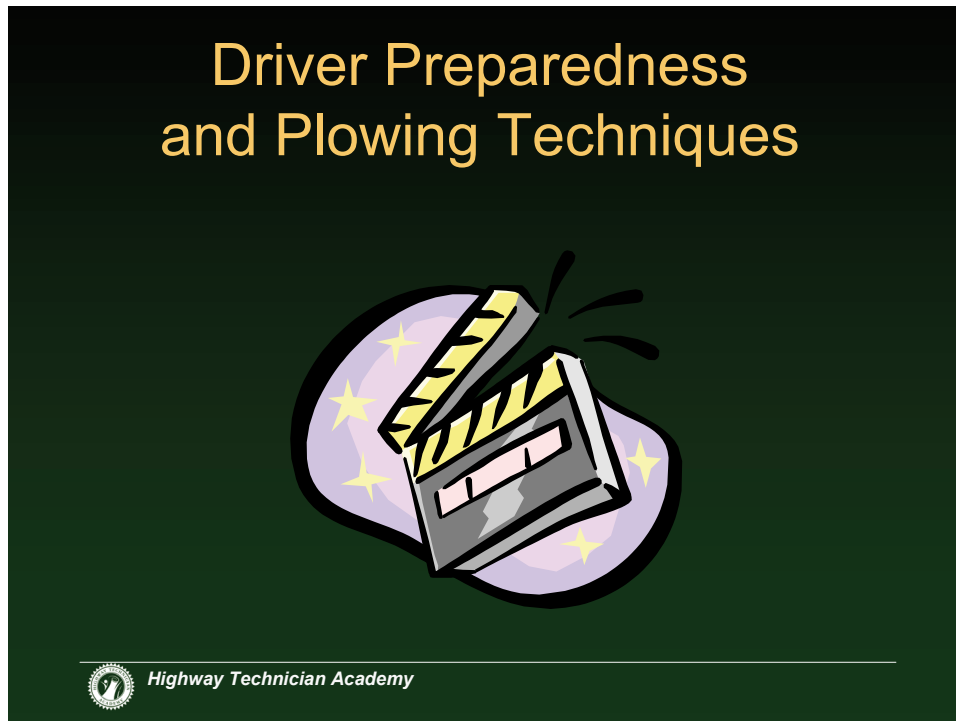


### Exercise: Using the Pre-Treatment Plan

Is pre-treating recommended if the forecasted temperature is below 20°F?



### C. Preparation Check List

1. **While it is true that snow and ice control is not an exact science**, it is also true that an ounce of prevention is worth a pound of cure. With regards to performing snow and ice control, there are a few areas where a moment of extra attention to detail can produce huge benefits.
  - a. Prior to Leaving the Maintenance Facility
    - i. Know the expected weather forecast.
    - ii. Dress for the conditions and bring extra clothing.
    - iii. Make sure you have all the necessary safety equipment.
    - iv. Get your route assignment and instructions from your supervisor.
    - v. Complete your CDL walk around inspection, form EM-78.

- vi. Check the condition of the plow and plow shoes. Look for loose bolts, worn shoes or blades and damaged or leaking hydraulic lines.
  - vii. Make sure radio communications are functioning.
- b. During the Work Cycle
- i. Utilize automatic applicator controls.
  - ii. Report unusual conditions.
  - iii. Under typical circumstances do not exceed 35 mph while plowing.
  - iv. Be alert for roadway hazards.
  - v. When crossing railroad tracks lift your plow and do not apply materials.
  - vi. Periodically stop to clean your lights and wipers.
  - vii. Check plow shoes and blades for wear.
  - viii. Apply material to the high side of curves when possible.
  - ix. Slow down and straighten plow blade angle to prevent plowing snow over the sides of bridges.
  - x. Do not apply materials in deep snow, on shoulders or berm areas, or on wet or bare pavements unless instructed to do so by your supervisor.
  - xi. Be sure to treat ramps.
  - xii. Complete all required documentation.
- c. Post Storm Activities
- i. Empty remaining material into the stockpile.
  - ii. Wash your truck.
  - iii. Refuel your truck.

**Exercise: Preparation Check List**

True or False? The CDL walk around inspection, form EM 78, should be completed before leaving the maintenance facility to perform snow and ice operations.